



Tsunamis *, , and the* Hawaiian Islands

TSUNAMI HAZARD ZONE



IN CASE OF EARTHQUAKE, GO



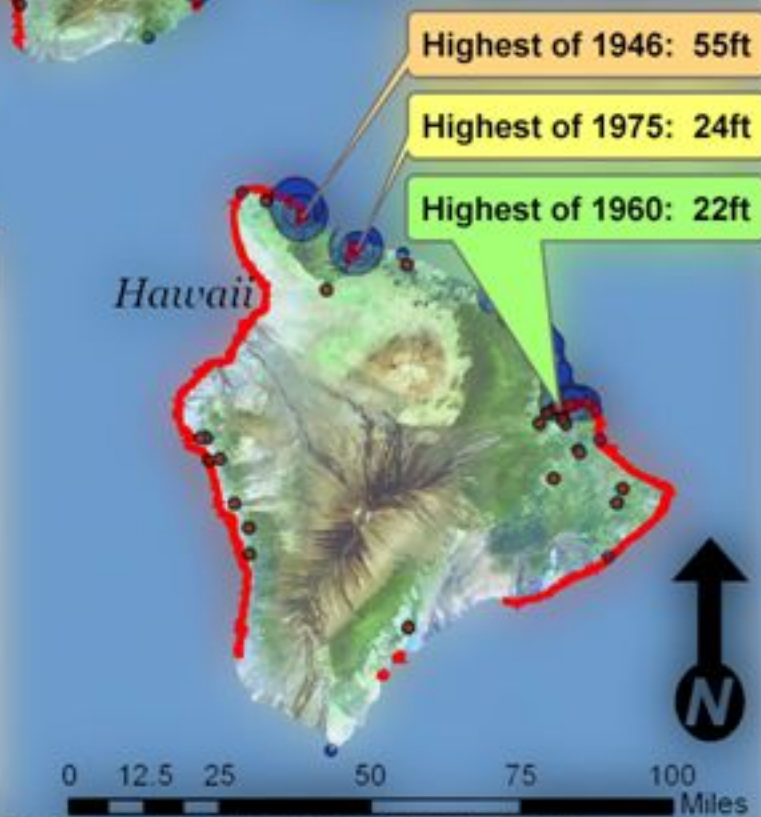
Due to Molokai's unique position, it has managed to escape most Tsunamis that reach the Islands. The exception is the massive Tsunami that hit in 1946. 5 of the 20 waves that hit Molokai were over 40 ft.



Major Tsunamis in Hawaii

| |
|-------------------------------|
| April 1, 1946 |
| Deaths: 159 Damages: \$26 Mil |
| November 4, 1952 |
| Deaths: 0 Damages: \$1 Mil |
| March 9, 1957 |
| Deaths: 0 Damages: \$5 Mil |
| May 23, 1960 |
| Deaths: 61 Damages: \$23 Mil |
| November 29, 1975 |
| Deaths: 32 Damages: \$33 Mil |

source: Pacific Disaster Center (www.pdc.org)

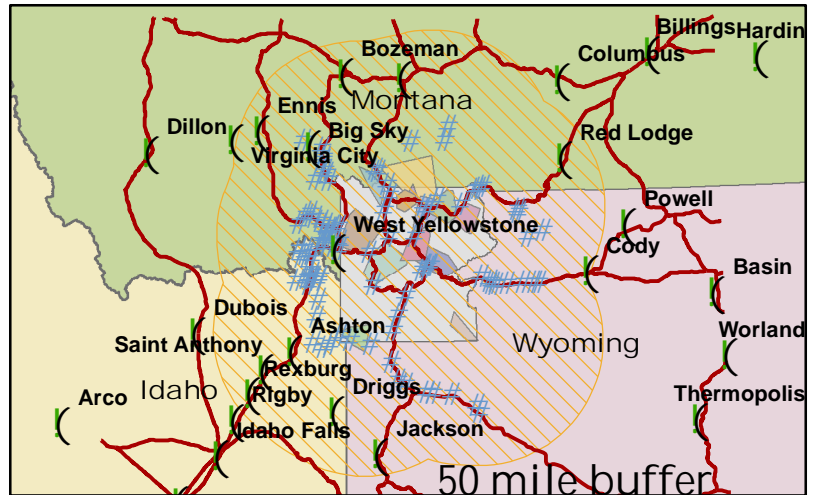


* The wave height symbols are used to illustrate what areas are regularly affected by Tsunamis. Distinguishing when each wave occurred is not feasible at this scale.

Wolves of Yellowstone Park

Yellowstone National Park

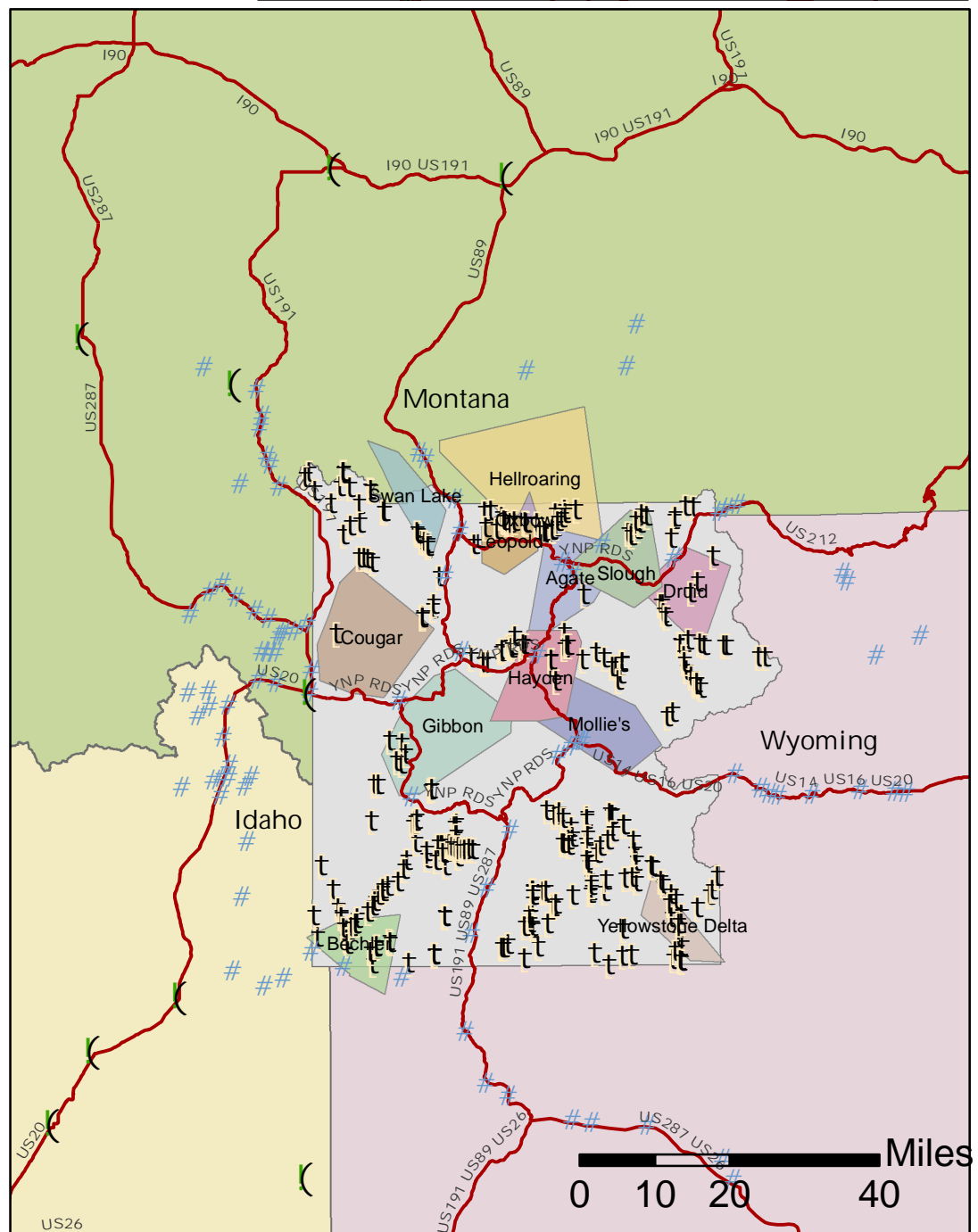
- () Tri-state cities
- # Hotels and other development
- t Backcountry Campsites
- Major Roads/Hwys
- Yellowstone Nat. Park



Pack Territories

Pack_Name

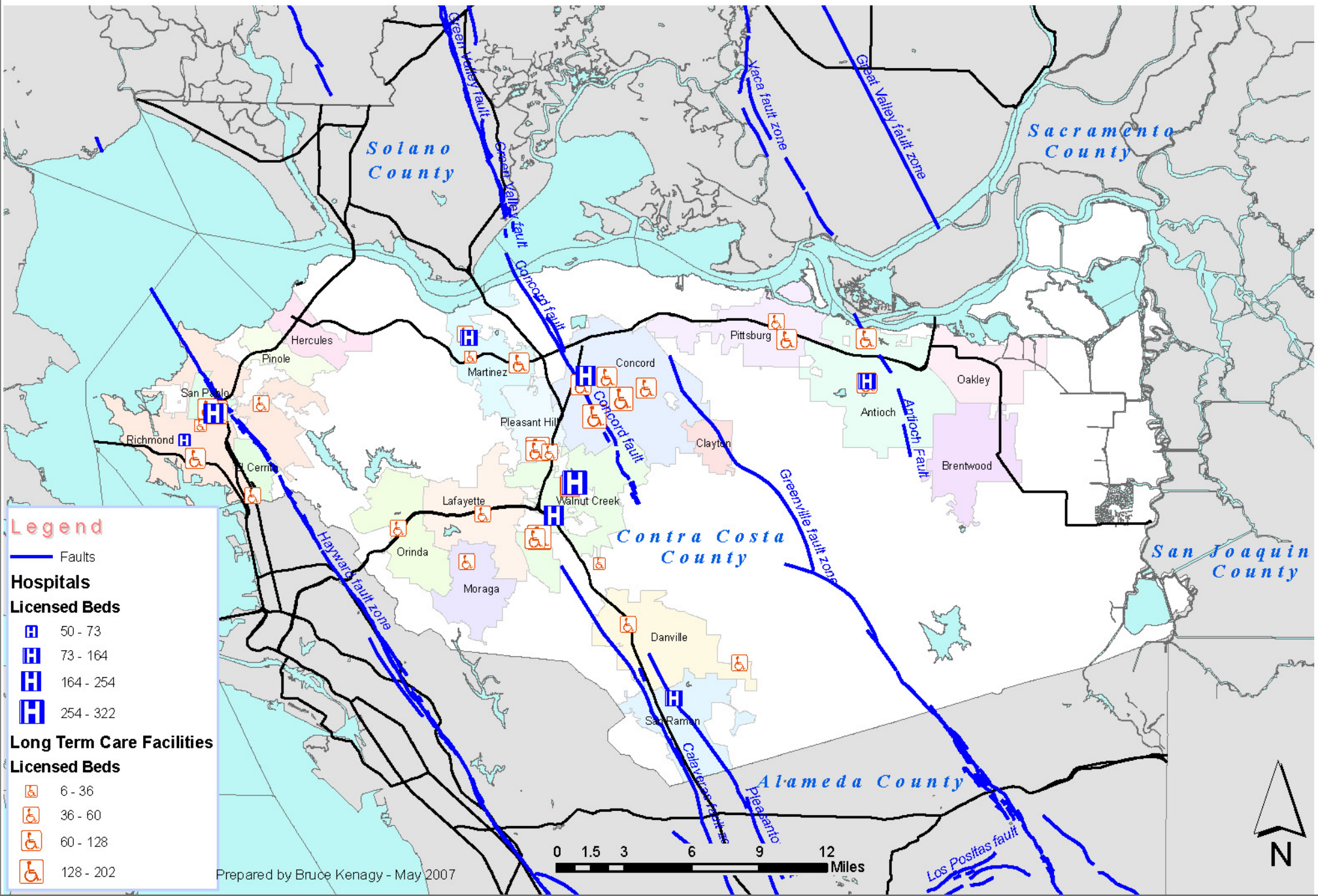
- Agate
- Bechler
- Cougar
- Druid
- Gibbon
- Hayden
- Hellroaring
- Leopold
- Mollie's
- Oxbow
- Slough
- Swan Lake
- Yellowstone Delta



Created by:
Aimee Stewart
15 May 2007

Contra Costa Hospitals and Long Term Care Facilities

Proximity to Known Faults



Legend

— Faults

Hospitals

Licensed Beds

- 50 - 73
- 73 - 164
- 164 - 254
- 254 - 322

Long Term Care Facilities

Licensed Beds

- 6 - 36
- 36 - 60
- 60 - 128
- 128 - 202

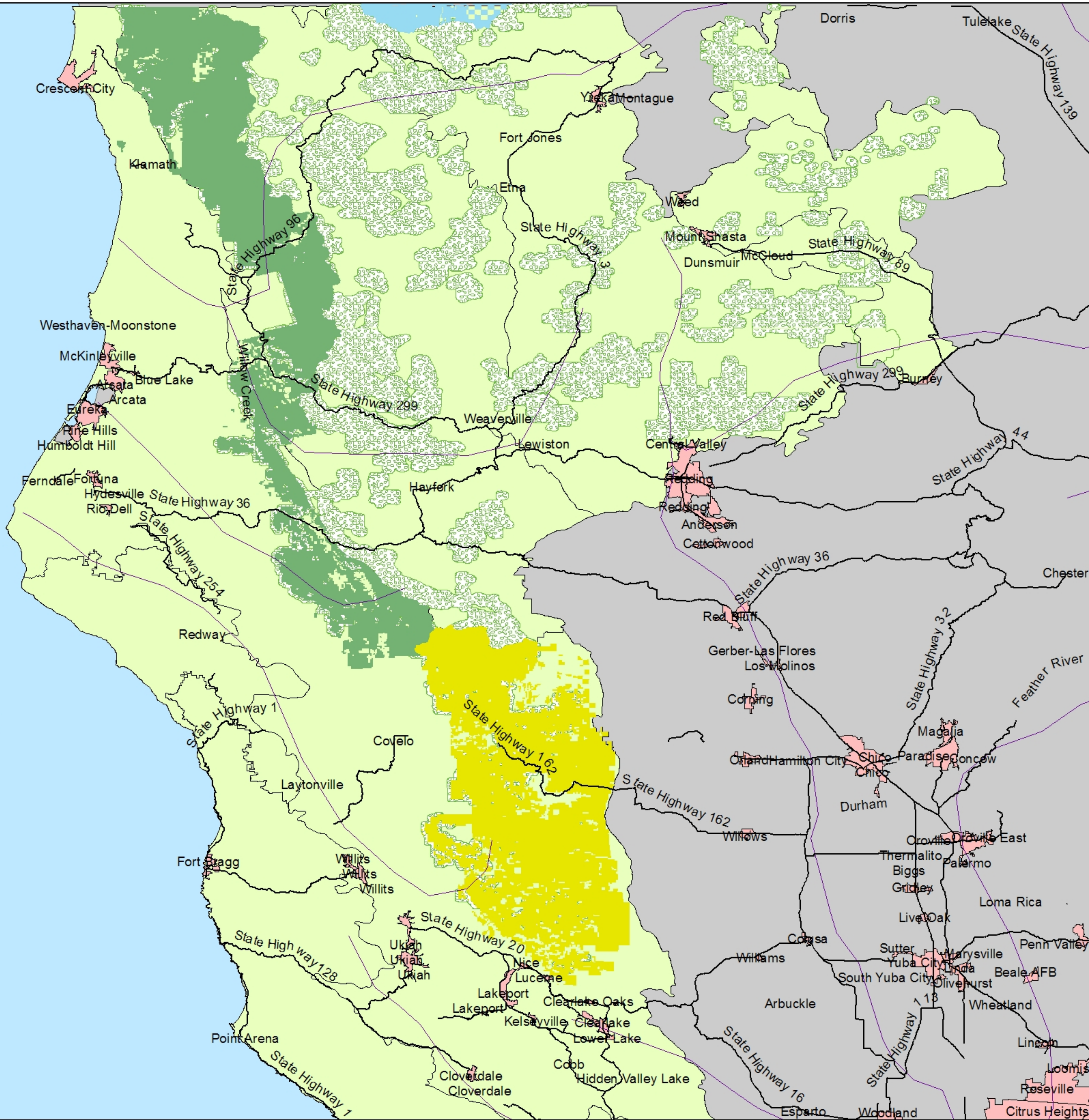
Prepared by Bruce Kenagy - May 2007



Transportation Options to San Francisco Museums



Current status of Spotted Owl habitat



▲ Major Cities

— Urban Area

Remaining Old Growth Forest

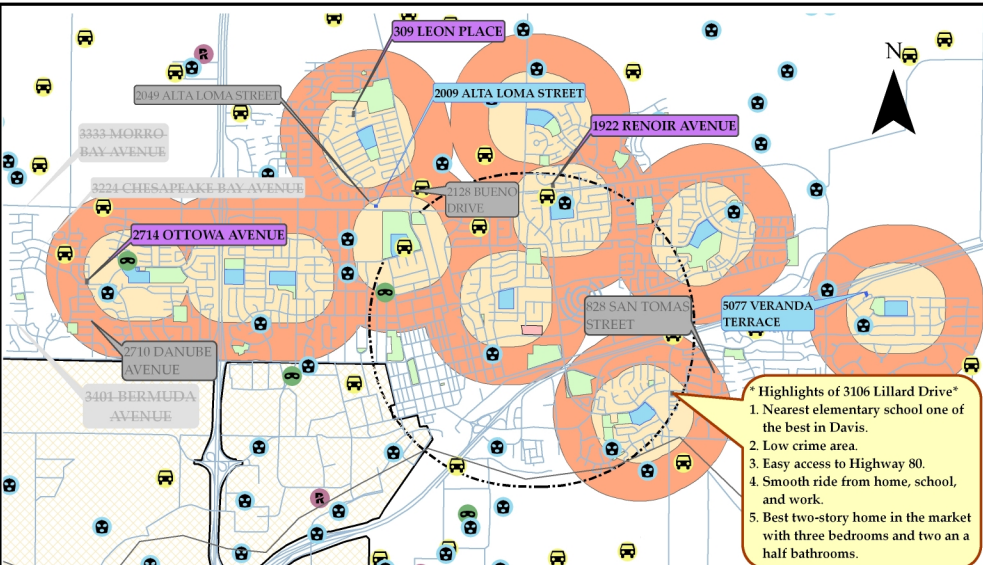
Spotted Owl Habitat

- OWN**
- Foraging habitat
 - Nesting and Roosting Habitat
 - Capable given time and peace
 - General Area of Spotted owl inhabitation

0 5 10 20 30 40 Miles

Clayton Visger





*** Highlights of 3106 Lillard Drive***

1. Nearest elementary school one of the best in Davis.
2. Low crime area.
3. Easy access to Highway 80.
4. Smooth ride from home, school, and work.
5. Best two-story home in the market with three bedrooms and two and a half bathrooms.

Legend

- Streets
- Elementary Schools
- Parks
- Public Works Department
- PWD Buffer - 1 mile
- UC Davis Boundary
- Elementary School Buffer**
- Distance (miles)
- 0.25
- 0.5
- Condos within Buffer
- Houses within Buffer
- Crimes 2002
- 1 Dot = 1
- Murder
- Rape
- Robbery
- Burglary
- Car Theft

**PROPOSED HOME:
3106 LILLARD DR.
HOUSE HUNT
CITY OF DAVIS**

